

# Energy Efficient Scheduling of Cloud Application Components with Brownout

Minxian Xu, Amir Vahid Dastjerdi, *Member, IEEE*, and Rajkumar Buyya, *Fellow, IEEE*

**Abstract**—It is common for cloud data centers meeting unexpected loads like request bursts, which may lead to overloaded situation and performance degradation. Dynamic Voltage Frequency Scaling and VM consolidation have been proved effective to manage overloads. However, they cannot function when the whole data center is overloaded. Brownout provides a promising direction to avoid overloads through configuring applications to temporarily degrade user experience. Additionally, brownout can also be applied to reduce data center energy consumption. As a complementary option for Dynamic Voltage Frequency Scaling and VM consolidation, our combined brownout approach reduces energy consumption through selectively and dynamically deactivating application optional components, which can also be applied to self-contained microservices. The results show that our approach can save more than 20 percent energy consumption and there are trade-offs between energy saving and discount offered to users.

**Index Terms**—Cloud data centers, energy efficient, application component, microservices, brownout

## 1 INTRODUCTION

THE emergence of cloud computing is viewed as a new paradigm in IT industry [1]. Cloud computing provides compelling features such as pay-as-you-go pricing model, low operation cost, high scalability and easy access. This makes Cloud computing attractive to business owners as it eliminates the requirement for users to plan ahead for provisioning, and allows enterprises to start with the minimum and request resources on demand. Providers like Amazon, Microsoft, IBM and Google have established data centers to support cloud applications around the world, and aimed to ensure that their services are flexible and suitable for the needs of the end-users.

Energy consumption by the cloud data centers has currently become one of the major problems for the computing industry. The growth and development of complex data-driven applications have promulgated the creation of huge data centers, which heightens the energy consumption [2]. The servers hosted in data centers dissipate more heat and need to be maintained in a fully air-conditioned and engineered environment. The cooling system is already efficient, while servers are still one of the major energy consumer. Hence, reducing server energy consumption has become a main concern of researchers [3].

Given the scenario that the budget and resource are limited, overloaded tasks may trigger performance degradation and lead the applications to saturate, in which some applications cannot be allocated by provider. Therefore, some users are not served in a timely manner or experience high

latencies, others may even not receive service at all [4]. The saturated applications also bring over-utilized situation to hosts and cause high energy consumption. Unfortunately, current resource management approaches like Dynamic Voltage Frequency Scaling (DVFS) and VM consolidation cannot function when the holistic data center is overloaded.

Currently, applications can be constructed via set of self-contained components that are also called microservices. The components encapsulate its content and expose its functionality through interfaces, which makes them flexible to be deployed and replaced. With components or microservices, developers and users can benefit from their technological heterogeneity, resilience, scaling, ease of deployment, organizational alignment, composability and optimizing for replaceability [5]. This brings the advantage of more fine-grained control over the application resource consumption.

It is common that application components have different priorities to be provided to users. Therefore, not all components or microservices in an application are mandatory to be functional all the time on hosts. We investigate whether it is feasible to downgrade user experience by disabling part of non-mandatory application components or microservices to relieve the over-utilized condition and reduce energy consumption.

Therefore, we take advantage of a paradigm called *brownout*. It is inspired by the concept of brownout in electric grids. Its original definition is the voltage shutdown to cope with emergency cases, in which light bulbs emit fewer lights and consumes less power [6]. A brownout example for online shopping system is introduced in [4], the online shopping application provides a recommendation engine to recommend similar products that users may be interested in. The recommendation engine component helps service provider to increase the profits, but it is not essential to run the engine. Recommendation engine also requires more resource in comparison to other components. Therefore, with brownout, under overloaded situation, the recommendation engine could be deactivated to serve more clients who require essential requirements.

- The authors are with the Cloud Computing and Distributed Systems (CLOUDS) Lab, Department of Computing and Information Systems, University of Melbourne, Parkville, Vic 3010, Australia.  
E-mail: xianecisp@gmail.com, {amir.vahid, rbuyya}@unimelb.edu.au.

Manuscript received 9 Aug. 2016; revised 8 Jan. 2017; accepted 26 Jan. 2017.  
Date of publication 30 Jan. 2017; date of current version 13 Feb. 2017.

Recommended for acceptance by L. Wang.

For information on obtaining reprints of this article, please send e-mail to: reprints@ieee.org, and reference the Digital Object Identifier below.

Digital Object Identifier no. 10.1109/TSUSC.2017.2661339

There are many other applications with some features can be disabled under brownout situation. Like the online document process application that contains the components for spell checking and report generating. These components are not required to be running all the time and can be deactivated for a while to reduce resource utilization. Other applications contain components that are not required to be executing all the time can be applied with the brownout approach. What the service providers need to spend efforts on is identifying the optional components and determining their discount when deactivated. Our motivation is to investigate the trade-off between energy consumption and discount, as well as offering different component selection policies.

We consider component-level control in our system model. The model could also be applied to container or microservices architecture. We model the application components as mandatory and optional, if required, optional components can be deactivated. By deactivating the optional components selectively and dynamically, the application utilization is reduced and eventually total energy consumption is saved as well. While under market scenario, service provider may provide discount for user as the services are deactivated.

Our objective is to tackle the problem of energy efficiency and our contributions are as below:

- Our approach considers the trade-offs between discount that should be given to a user if a component is deactivated and how much of energy can be saved.
- Then we propose a number of policies that consider the aforementioned trade-offs and dynamically make decisions on which components are going to be deactivated.

The rest of this paper is organized as: after discussing related work in Section 2, we present the brownout enabled system model and problem statement in Section 3. Section 4 introduces our proposed brownout enabled approach in details, while the experimental results of the proposed approach are illustrated in Section 5. The conclusions along with future work are given in Section 6.

## 2 RELATED WORK

It is an essential requirement for Cloud providers to reduce energy consumption, as it can both decrease operating costs and improve system reliability. Data centers can consume from 10 to 100 times more power per square foot than a typical office building. A large body of literature has focused on reducing energy consumption in cloud data centers, and the dominant categories for solving this problem are VM consolidation and Dynamic Voltage Frequency Scaling [7].

VM consolidation is regarded to be an act of combining into an integral whole, which helps minimizing the energy consumed by allocating work among fewer machines and turning off unused machines [8]. Under this approach, the VMs hosted on underutilized hosts would be consolidated to other servers and the remaining hosts would be transformed into power-saving state. Beloglazov et al. [9] proposed scheduling algorithms considering Quality of Service and power consumption in Clouds. The algorithms objective is energy-efficient mapping VMs to cloud servers through dynamic VM consolidation. The VM consolidation process is modeled as a bin-packing problem, where VMs are regarded as items and servers are regarded as bins. The

advantages of the proposed algorithms are that they are independent of workload types and do not need to know the VM application information in advance.

The authors in [10] introduced adaptive approaches for VM consolidation with live migration according to VM historical data. Similar to [9], the VM placement is also modeled as a bin-packing problem, in which VMs from over-utilized servers are allocated to the PM with the least increase of power consumption and under-utilized servers are switched to be off or low power mode. In comparison to [9], this work considers multiple dimension resource (CPU, memory and bandwidth) and focuses more on VM placement optimization stage by proposing various policies. This work advances previous work by discussing online algorithm competitive ratio for energy efficient VM consolidation, which proves the algorithm's efficiency.

A self-adaptive method for VM consolidation on both CPU and memory is introduced in [11]. Its objective is minimizing the overall costs caused by energy related issues. The VM assignment and migration processes are determined by probabilistic functions (Bernoulli trial). The mathematical analysis and realistic testbed results show that the proposed algorithm reduces total energy consumption for both CPU-intensive and memory-intensive workloads with suitable Bernoulli trial parameters. Compared with bin-packing approach (adopted in [9], [10]), the proposed algorithm in this work can reduce migration times of VMs and its time complexity is lower than bin-packing-based algorithm, which offers higher efficiency in the online scenario. To achieve the best performance, the disadvantage of this work is that it needs some efforts to find the most suitable Bernoulli trial parameter. Chen et al. [12] extended [11] and proposed another utilization-based probabilistic VM consolidation algorithm that aimed to reducing energy consumption and VM migration times. The author also made performance comparison with the algorithms in [9].

Corradi et al. [13] considered VM consolidation in a more practical viewpoint related to power, CPU and networking resource sharing and tested VM consolidation in OpenStack, which shows VM consolidation is a feasible solution to reduce energy consumption. Salehi et al. [14] proposed a VM consolidation based approach, which is an adaptive energy management policy that preempts VMs to reduce the energy consumption according to user-specific performance constraints and used fuzzy logic for obtaining appropriate decisions.

Han et al. [15] used Markov Decision Process (MDP) to handle VM management to reduce data center energy consumption. Through MDP, the optimal result is obtained by solving objective function. However, its solution dimension is quite large, the authors also proposed an approximate MDP approach to reduce the solution space and achieve faster convergence. In this approximate algorithm, a centralized controller calculates the utilization function for each VM and determines the possibilities for the state transition. The state transitions in this algorithm represent the VMs are migrated from one server to another. The authors also theoretically validated the upper bound of algorithm's error.

A practical OpenStack framework is implemented in [16] considering VM consolidation and data center power management. This framework is available for customized algorithm implementation. With public APIs, the framework is transparent to the base OpenStack installation, and it is not required to modify any OpenStacks configurations. This

work is the first step to implement VM consolidation in OpenStack to minimize total energy consumption.

The DVFS technique introduces a trade-off between computing performance and energy consumed by the server. The DVFS technique lowers the frequency and voltage when the processor is lightly loaded, and utilizes maximum frequency and voltage when the processor is heavily loaded. Von et al. [17] introduced a power-aware scheduling algorithm based on DVFS-enabled cluster. Hanumaiah et al. [18] introduced a solution that considers DVFS, thread migration and active cooling to control the cores to maximize overall energy efficiency.

The authors in [19] modelled real-time service to be real-time VM requests and applied several DVFS algorithms to reduce energy consumption. Their objective is balancing the energy consumption and prices. The major concern in this work is that less energy is preferred at the same price, thus three different schemes based on DVFS are proposed to balance the energy consumption and prices. The proposed schemes are easy to implement while the adaptive DVFS evaluations are restricted by the simplified and known-in-advance queueing model.

Deng et al. [20] proposed a method named CoScale for DVFS coordinating on CPU and memory while investigating performance constraints, which is the first trial to coordinate them together. Its objective is finding the most efficient frequency from a set of frequency settings while ensuring system performance. The most efficient frequencies for cores and memory are selected as they minimize the whole system energy consumption. CoScale adopts a fine-grained heuristic algorithm that iteratively predicates the component frequencies according to its performance counters as well as online models. However, CoScale is not suitable for offline workloads because it cannot reduce the possible frequency space as like in online workloads.

Teng et al. [21] combined DVFS and VM consolidation together to minimize total energy consumption. The energy saving objective is mainly applied to batch-oriented scenario, in which the authors introduced a DVFS-based algorithm to consolidate VMs on servers to minimize energy consumption and ensure job Service Level Agreement. With theoretical analysis and realistic testbed on Hadoop, the authors proved that the proposed algorithm can find the most efficient frequency that is only associated with the processor type and its VM consolidation performance is insensitive to tunable parameters. The limitations of this work is that its realistic testbed is already upgraded to a new version that provides better management, which is more persuasive to implement the proposed approach on the updated platform.

Brownout was originally applied to prevent blackouts through voltage drops in case of emergency. Klein et al. [4] first borrowed the approach of brownout and applied it to cloud applications, aiming to design more robust applications under unpredictable loads. Tomas et al. [22] used the brownout along with overbooking to ensure graceful degradation during load spikes and avoid overload. Durango et al. [6] introduced novel load balancing strategies for applications by supporting brownout. In a brownout-compliant application or service, the optional parts are identified by developers and a control knob called *dimmer* that controls these optional parts is also exported. The dimmer value represents a certain probability given by a control variable and shows how often these optional parts are

executed. In addition, a brownout controller is also required to adjust the dimmer value to avoid overload [22].

To the best of our knowledge, our approach is the first research to reduce energy consumption with brownout at components level, which also considers revenues for cloud service providers. Our approach provides a complementary option apart from VM consolidation and DVFS.

### 3 PROBLEM STATEMENT

In this section, we explain our system model and state the problem we aim to tackle. For reference, Table 1 summaries the symbols and their definitions throughout this paper.

#### 3.1 System Model

Our system model (Fig. 1) includes entities: users, applications and cloud providers, which are discussed as below:

*Users.* Users submit service requests to cloud data centers to process. User entities contain user id and requested applications (services) information.

*Applications.* The application entities in our model come into system together with user entities. The applications consist of a number of components, which are tagged as mandatory or optional.

*Mandatory Component.* The mandatory component is always running (activated) when the application is executed.

*Optional Component.* The optional component can be set as activated or deactivated. These components have parameters like *utilization* and *discount* (penalty payment amount). Utilization indicates the amount of reduced utilization, and discount represents the price that is cut. The deactivation and activation of optional components are controlled by the *brownout controller*, which makes decisions based on system status and component selection policies.

The components can also be *connected*, which means that they communicate with each other and there are data dependencies between them. Therefore, we consider that if a component is deactivated, then all its connected optional components would also be set as deactivated. For example in Fig. 1, if Com3 in Application #1 is deactivated, Com2 should also be deactivated; in Application #2, if Com1 is deactivated, Com3 should also be deactivated; in Application #n, if Com4 is deactivated, Com3 should also be deactivated, but Com2 is still working (Com1 is connected with Com3, but Com1 is mandatory, so it is not deactivated).

*Cloud Providers.* Cloud providers offer resources to meet service demands, which host a set of VMs or containers to run applications.

#### 3.2 Power Model

To calculate the total energy consumption of data center, we adopt the server power model proposed by Zheng et al. [23]. The server power consumption is modeled as

$$P_i^{server} = \begin{cases} P_i^{idle} + \sum_{j=1}^{w_i} u(VM_{i,j}) \times P_i^{dynamic} & , w_i > 0 \\ 0 & , w_i = 0 \end{cases} \quad (1)$$

$P_i^{server}$  is composed of idle power and dynamic power. The idle power is regarded as constant and the dynamic power is linear to the total CPU utilization of all the VMs on the server. If no VM is hosted on a server, the server is turned off to save power.  $VM_{i,j}$  refers to the  $j$ th VM on the  $i$ th server,  $w_i$  means the number of VMs assigned to server  $i$



TABLE 1  
Symbols and Definitions

Symbol	Definition
$h_i$	Server (host) $i$
$P_{server}$	Power of $h_i$
$P_{idle}^i$	Power when $h_i$ is idle
$P_{dynamic}^i$	Power when $h_i$ is fully loaded
$P_{max}^i$	Maximum power of $h_i$
$hl$	Server list in data center
$w_i$	Number of VMs assigned to $h_i$
$VM_{i,j}$	VM $j$ on $h_i$
$u(VM_{i,j})$	Utilization of VM $j$ on $h_i$
$d(VM_{i,j})$	Discount of VM $j$ on $h_i$
$App_c$	Application component $c$
$A_j$	Total number of application components
$u(App_c)$	Utilization of application component $c$
$d(App_c)$	Discount of application component $c$
$D_i$	Total discount from server $i$
$N$	Total number of VMs
$M$	Total number of servers
$Eff_{pa}$	Algorithm efficiency of proposed algorithm $pa$
$E_{pa}$	Energy consumption of proposed algorithm $pa$
$E_{bl}$	Energy consumption of baseline algorithm $bl$
$D_{pa}$	Discount amount of proposed algorithm $pa$
$\alpha$	Weight of discount to calculate algorithm efficiency
$t$	Time interval $t$
$T$	The whole scheduling interval
$TP$	Overloaded power threshold
$\theta_t$	Dimmer value in brownout at time $t$
$n_t$	Number of overloaded hosts at time $t$
$P_i^r$	Expected power reduction of $h_i$
$COH()$	Calculate the number of overloaded hosts
$HPM()$	Host power model to compute expected utilization reduction
$u_{h_i}^r$	Expected utilization reduction on $h_i$
$VUM()$	VM utilization model to compute expected utilization reduction
$u_{VM_{i,j}}^r$	Expected utilization reduction on $VM_j$ on $h_i$
$CSP()$	Component selection policy to deactivate components
$dcl_{i,j,t}$	Deactivated component list at time $t$ on $h_i$
$S_t$	Set of deactivated components connection tags
$Ct(App_c)$	Connection tag of component $App_c$
$ocl_{i,j,t}$	Optional component list of $VM_j$ on $h_i$ at time $t$
$p$	Position index in optional component list
$R_h$	Available resource of host
$R_v$	Maximum requested resource of VM
$C_e$	Cost of energy consumption per unit of time
$C_o$	Cost of overloads per unit of time
$\varepsilon$	Relative cost of overloads compared with $C_e$
$t_b$	Time for brownout operation
$t_m$	Time for VM consolidation
$\tau$	The times of brownout and VM consolidation occur in $T$

$$u(VM_{i,j}) = \sum_{c=1}^{A_j} u(App_c). \quad (2)$$

The utilization of  $VM_{i,j}$  is represented as  $u(VM_{i,j})$ , which is computed by summing up all the application utilization on the  $j$ th VM. The  $c$  is the component id and  $A_j$  is the number of application components. As processors are still the main energy consumer of servers, we focus on CPU utilization in this work.

### 3.3 Discount Amount

$$D_i = \sum_{j=1}^{w_i} d(VM_{i,j}). \quad (3)$$

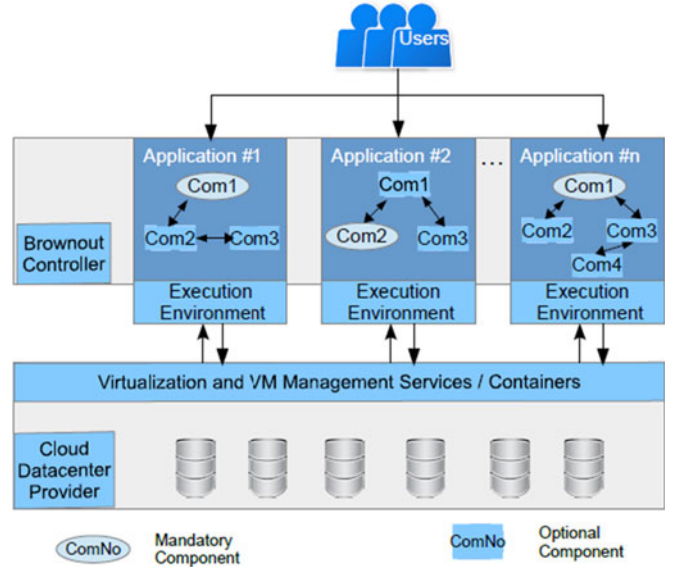


Fig. 1. System model with brownout.

In Equation (3),  $D_i$  is the total discount amount obtained from all VMs, in which the individual discount  $d(VM_{i,j})$  from  $VM_{i,j}$  is the sum of all application components discount amount  $d(App_c)$  as shown as

$$d(VM_{i,j}) = \sum_{c=1}^{A_j} d(App_c). \quad (4)$$

$A_j$  is the number of applications hosted on  $VM_j$ , and  $d(VM_{i,j})$  is the discount happened from  $VM_j$  on server  $i$ , and  $D_i$  is the total discount amount on server  $i$ .

### 3.4 Constraints and Objectives

The above equations subject to the following constraints:

$$\sum_{i=1}^M w_i = N \quad (5)$$

$$\sum_{j=1}^{w_i} u(VM_{i,j}) \leq 1, \forall i \in [1, M]. \quad (6)$$

$N$  is the total number of VMs and  $M$  is the total number of servers. Equation (5) represents the total number of VMs assigned to hosts  $w_i$  equals to the sum of VMs. Equation (6) represents the sum of all the VMs utilization cannot surpass their host available utilization.

We formulate the objectives of this problem as

$$\min \sum_{i=1}^M P_i^{server}. \quad (7)$$

As well as

$$\min \left( \sum_{i=1}^M D_i \right). \quad (8)$$

Therefore, we aim at investigating the trade-off total energy consumption and discount amount.

To measure the performance of an algorithm, we represent the algorithm efficiency  $Eff_{pa}$

$$Eff_{pa} = \frac{E_{pa}}{E_b} + \alpha D_{pa}, \quad (9)$$

where  $E_{pa}$  is the energy consumption of the proposed algorithm,  $E_b$  is the baseline algorithm energy consumption,  $D_{pa}$  is the discount amount offered by the proposed algorithm. If the proposed algorithm saves more energy than the baseline algorithm,  $\frac{E_{pa}}{E_b}$  is a value between 0 to 1, and  $D_{pa}$  represents the offered discount percentage, which also belongs to 0 to 1. Thus, the smaller  $E_{ffpa}$  is, the more energy is reduced and less discount amount is offered. The  $\alpha$  is the weight of discount, its default value is 1.0, if service provider care more on discount,  $\alpha$  is set as larger than 1.0; if they care more about energy saving,  $\alpha$  is set as less than 1.0.

## 4 PROPOSED APPROACH

Prior to brownout approach, we require a VM placement and consolidation algorithms. We adopt the placement and consolidation algorithm (PCO) proposed by Beloglazov et al. [9]. Then we propose our brownout enabled algorithm based on PCO and introduce a number of component selection policies considering component utilization and discount.

### 4.1 VM Placement and Consolidation Algorithm

The VM placement and consolidation algorithm is an adaptive heuristics for dynamic consolidation of VMs and extensive experiments show that it can significantly reduce energy consumption. In the initial VM placement phase, PCO sorts all the VMs in decreasing order of their current CPU utilization and allocates each VM to the host that increases the least power consumption due to this allocation. In the VM consolidation phase, PCO optimizes VM placement according to loads of hosts: PCO separately picks VMs from over-utilized and under-utilized hosts to migrate, and finds new placements for them. After migration, the over-utilized hosts are not overloaded any more and the under-utilized hosts are switched to sleep mode.

### 4.2 Energy Efficient Brownout Enabled Algorithm

Our proposed energy efficient brownout enabled approach (noted as *EEBA*) is an enhanced approach based on PCO algorithm. According to host power consumption, the brownout controller dynamically deactivates or activates applications' optional components on VMs to relieve overloads and reduce the power consumption.

As shown in Algorithm 1, *EEBA* mainly consists of six steps:

Before entering the approach procedures, service provider first needs to initialize VM placement by algorithm like PCO and overloaded power threshold (lines 1-2). The power threshold  $TP$  is a value for checking whether a host is overloaded. Then the other steps are as below:

- 1) In each time interval  $t$ , checking all the hosts and counting the number of overloaded hosts as  $n_t$  (line 4);
- 2) Adjusting dimmer value  $\theta_t$  as  $\sqrt{\frac{PT}{M}}$  based on the number of overloaded hosts  $n_t$  and host size  $M$  (line 6).

As mentioned in our related work, the dimmer value  $\theta_t$  is a control knob used to determine the adjustment degree of power consumption at time  $t$ . The dimmer value  $\theta_t$  is 1.0 if all the hosts are overloaded at time  $t$  and it means that brownout controls components on all the hosts. The dimmer value is 0.0

if no host is overloaded and brownout will not be triggered at time  $t$ . The dimmer adjustment approach shows that dimmer value varies along with the number of overloaded hosts.

- 3) Calculating the expected utilization reduction on the overloaded hosts (lines 8-10). According to the dimmer value and host power model, *EEBA* calculates expected host power reduction  $P_i^r$  (line 9) and expected utilization reduction  $u_{hi}^r$  (line 10). With host power model (like in Table 3), we have host power at different utilization levels, so the utilization reduction can be computed based on power reduction. For example, in a power model, the host with 100 percent utilization is 247 Watts and 80 percent utilization is 211 Watts, if the power is required to be reduced from 247 to 211 Watts, the expected utilization reduction is  $100\% - 80\% = 20\%$ .
- 4) Calculating the expected utilization reduction on VM (lines 11-13). An empty deactivated component list  $dcli_{i,j,t}$  of  $VM_j$  on host  $h_i$  is initialized to prepare for storing deactivated components (line 12). Then the expected VM utilization reduction  $u_{VM_{i,j}}^r$  is computed based on VM utilization model as VM utilization multiplies  $u_{hi}^r$  (line 13).
- 5) Applying component selection policy *CSP* to find and deactivate components list  $dcli_{i,j,t}$  (line 14). According to the expected VM utilization reduction  $u_{VM_{i,j}}^r$ , component selection policy is responsible for finding the components satisfying the utilization constraint, deactivating these components and their connected ones, and updating total discount amount (line 15).
- 6) In *EEBA*, if no host is above the power threshold, the algorithm activates the optional components that have been set as deactivated (line 20).

Finally, after finishing the main steps of *EEBA*, VM consolidation in PCO algorithm is applied to optimize VM placement (line 22).

The *EEBA* algorithm takes effect between the VM placement and VM consolidation in PCO. VMs are initially placed by VM placement phase in PCO, after that, if no host is above the power threshold, the *EEBA* does not work; otherwise, the brownout is triggered to handle the overloaded condition, then the VM consolidation phase in PCO is applied.

As applications may have multiple optional components with different utilization and discount amount, for Algorithm 1 step 4 that applies component selection policy, we have designed several policies:

*Nearest Utilization First Component Selection Policy (NUFCS)*.

The objective of *NUFCS* is finding and deactivating a single component in the component list. Compared with other components, the single component has the nearest utilization to  $u_{VM_{i,j}}^r$ . *NUFCS* can find the goal component in  $O(n)$  time, which is efficient in online scheduling.

If the deactivated component is connected with other components, *NUFCS* also deactivates other connected components. *NUFCS* runs fast and can reduce utilization, but if  $u_{VM_{i,j}}^r$  is much larger than all the single component utilization in the component list, more components should be deactivated to achieve expected energy reduction.

Therefore, we propose another three multiple components selection policies to achieve expected utilization reduction:

---

**Algorithm 1.** Energy Efficient with Brownout Algorithm (EEBA)

---

**Input:** hostList  $hl$  with size  $M$ , application components information, overloaded power threshold  $TP$ , dimmer value  $\theta_t$  at time  $t$ , scheduling interval  $T$ , deactivated component list  $dcl_{i,j,t}$  of  $VM_{i,j}$  on host  $h_i$ , power model of host  $HPM$ , VM utilization model  $VUM$ , component selection policy  $CSP$

**Output:** total energy consumption, discount amount, number of shutting down hosts

```

1: use PCO algorithm to initialize VMs placement
2: initialize parameters with inputs, like  $TP$ 
3: for  $t \leftarrow 0$  to  $T$  do
4:    $n_t \leftarrow COH(hl)$ 
5:   if  $n_t > 0$  then
6:      $\theta_t \leftarrow \sqrt{\frac{n_t}{M}}$ 
7:     for all  $h_i$  in  $hl$  (i.e.,  $i = 1, 2, \dots, M$ ) do
8:       if ( $P_i^{server} > P_i^{max} \times TP$ ) then
9:          $P_i^r \leftarrow \theta_t \times P_{h_i}$ 
10:         $u_{h_i}^r \leftarrow HPM(h_i, P_i^r)$ 
11:        for all  $VM_{i,j}$  on  $h_i$  (i.e.,  $j = 1, 2, \dots, w_i$ ) do
12:           $dcl_{i,j,t} \leftarrow \text{NULL}$ 
13:           $u_{VM_{i,j}}^r \leftarrow VUM(u_{h_i}^r, VM_{i,j})$ 
14:           $dcl_{i,j,t} \leftarrow CSP(u_{VM_{i,j}}^r)$ 
15:           $D_i \leftarrow D_i + d(VM_{i,j})$ 
16:        end for
17:      end if
18:    end for
19:  else
20:    activate deactivated components
21:  end if
22:  use VM consolidation in PCO algorithm to optimize VM placement
23: end for

```

---

*Lowest Utilization First Component Selection Policy (LUFCS).* LUFCS selects a set of components from the component with the lowest utilization until these components achieve expected utilization reduction. This policy follows the assumption that the component with less utilization is less important for users. Hence, with this policy, the service provider deactivates a number of components with low utilization to satisfy the expected utilization reduction.

*Lowest Price First Component Selection Policy (LPFCS).* LPFCS selects a set of components from the component with lowest discount. This policy focuses more on discount and its objective is deactivating a number of components with less discount amount and satisfying the expected utilization reduction.

*Highest Utilization and Price Ratio First Component Selection Policy (HUPRFCS).* HUPRFCS selects a set of components considering component utilization and discount together. The components with larger  $\frac{u(Appc)}{d(Appc)}$  values are prior to be selected. Its objective is deactivating the components with higher utilization and smaller discount. Therefore, the service provider saves more energy while offering less discount amount.

Algorithm 2 shows an example about how the component selection policy works. The example is about LUFCS:

the input of the algorithm is the expected configured utilization  $u_{VM_{i,j}}^r$  and the output is the deactivated components list  $dcl_{i,j,t}$ . The steps are:

- a) Algorithm 2 sorts the optional components list  $ocl_{i,j,t}$  based on component utilization parameter in ascending sequence (line 1), therefore, the component with the lowest utilization is put at the head. For connected components, the sorting process is modified as treating the connected components together and using their average utilization for sorting, which lowers the priority of deactivating connected components to avoid deactivating too many components due to connections;
- b) Initialize a set  $S_t$  that stores the deactivated components connection tags (line 2);
- c) Algorithm 2 deactivates the first component and its connected components if it satisfies the expected utilization reduction (lines 3-11). If the first component utilization parameter value is above  $u_{VM_{i,j}}^r$ , Algorithm 2 puts this component into the deactivated components list  $dcl_{i,j,t}$  and puts its connection tag  $Ct(Appc)$  (a tag shows how it is connected with other components) into  $S_t$ . After that, Algorithm 2 finds other connected components and put them into deactivated components list. Finally, summing up the deactivated components discount amount as  $d(VM_{i,j})$ ;
- d) If the first component utilization does not satisfy the expected utilization reduction, Algorithm 2 finds a position  $p$  in the optional components list (lines 13-23). The sublist before  $p - 1$  is the last sublist that makes its components utilization sum less than  $u_{VM_{i,j}}^r$  and the sublist that before  $p$  is the first sublist that makes its components utilization sum larger than  $u$ . The policy selects the sublist with utilization sum closer to the  $u_{VM_{i,j}}^r$  from these two sublists;
- e) Algorithm 2 puts all the components in the sublist into the deactivated components list and puts their connection parameters into the  $S_t$  (lines 24-28);
- f) Algorithm 2 finds other connected components and puts them into the deactivated components list, and updates the discount amount (lines 29-35);
- g) Finally, Algorithm 2 returns the deactivated components list (line 36).

The LPFCS and HUPRFCS procedures are quite similar to LUFCS except the sorting process at line 1. For example, the LPFCS sorts the optional components list according to component discount, while HUPRFCS sorts the optional components list based on component utilization and discount ratio  $\frac{u(Appc)}{d(Appc)}$ . For connected components, these policies also treat them together and use their discount or utilization and discount ratio to sort.

The complexity of our proposed algorithm at each time interval is calculated based on two parts, one is the brownout part and the other is the PCO part. At each time interval, the complexity of the brownout part is  $O(m * M)$ , where  $m$  is the maximum number of components in all applications,  $M$  is the number of hosts. The complexity of the PCO part is



$O(2M)$  as analyzed in [9]. The complexity at each time interval of our proposed algorithm is the sum of the two parts, which is to  $O((2 + m) * M)$ .

---

**Algorithm 2.** Component Selection Policy: Lowest Utilization First Component Selection Policy (LUFCS)

---

**Input:** expected utilization reduction  $u_{VM_{i,j}}^r$  on  $VM_{i,j}$   
**Output:** deactivated components list  $dcl_{i,j,t}$

- 1: Sort the optional component list  $ocl_{i,j,t}$  based on utilization  $u(App_c)$  in ascending order //Other policies may change the sorting approach at this line. If there are connected components, the connected components are treated together and sorted by their average utilization
- 2:  $S_t \leftarrow \text{NULL}$
- 3: **if**  $u(App_{1st}) \geq u_{VM_{i,j}}^r$  **then**
- 4:  $dcl_{i,j,t} \leftarrow dcl_{i,j,t} + App_{1st}$
- 5:  $S_t \leftarrow S_t + Ct(App_{1st})$
- 6: **for all**  $App_c$  in  $ocl_{i,j,t}$  **do**
- 7: **if**  $Ct(App_c)$  is in  $S_t$  **then**
- 8:  $dcl_{i,j,t} \leftarrow dcl_{i,j,t} + App_c$
- 9:  $d(VM_{i,j}) \leftarrow d(VM_{i,j}) + d(App_c)$
- 10: **end if**
- 11: **end for**
- 12: **else**
- 13:  $p \leftarrow 0$
- 14: **for**  $App_c$  in  $ocl_{i,j,t}$  **do**
- 15: **if**  $(\sum_0^k(App_c) < u_{VM_{i,j}}^r \ \& \ \sum_0^{k+1}(App_c) > u_{VM_{i,j}}^r)$  **then**
- 16: **if**  $(u_{VM_{i,j}}^r - \sum_0^k(App_c) < \sum_0^{k+1}(App_c) - u_{VM_{i,j}}^r)$  **then**
- 17:  $p = k - 1$
- 18: **else**
- 19:  $p = k$
- 20: **end if**
- 21: **break**
- 22: **end if**
- 23: **end for**
- 24: **for**  $c \leftarrow 0$  to  $p$  **do**
- 25:  $dcl_{i,j,t} \leftarrow dcl_{i,j,t} + App_c$
- 26:  $S_t \leftarrow S_t + Ct(App_c)$
- 27:  $d(VM_{i,j}) \leftarrow d(VM_{i,j}) + d(App_c)$
- 28: **end for**
- 29: **for all**  $App_c$  in  $ocl_{i,j,t}$  **do**
- 30: **if**  $Ct(App_c)$  in  $S_t$  **then**
- 31:  $dcl_{i,j,t} \leftarrow dcl_{i,j,t} + App_c$
- 32:  $d(VM_{i,j}) \leftarrow d(VM_{i,j}) + d(App_c)$
- 33: **end if**
- 34: **end for**
- 35: **end if**
- 36: **return**  $dcl(i, j, t)$

---

### 4.3 EEBA Competitive Analysis

We apply competitive analysis [10], [24] to analyze the brownout approach combining with VM consolidation for multiple hosts and VMs. We assume that there are  $M$  homogeneous hosts and  $N$  homogeneous VMs. If the available resource of each host is  $R_h$  and maximum resource that can be allocated to VM is  $R_v$ , then the maximum number of VMs allocated to host is  $\frac{R_h}{R_v}$ . Overloaded situation occurs when VMs require more capacity than  $R_h$ . The brownout approach handles with the overloaded situation with a processing time  $t_b$ , and VMs are migrated between hosts through VM consolidation with migration time  $t_m$ . The cost of overloads per unit of time is  $C_o$ , and the cost of energy

consumption is  $C_e$ . Without loss of generality, we can define  $C_e = 1$  and  $C_o = \varepsilon$ . Then we have the following theorem:

**Theorem 1.** The upper bound of the competitive ratio of EEBA algorithm for the components control and VM migration problem is  $\frac{EEBA(I)}{OPT(I)} \leq 1 + \frac{N\varepsilon}{N+M}$ .

**Proof.** The EEBA controls the application components to handle with the overloaded situation and applies VM consolidation to reduce energy consumption. This algorithm deactivates application components to make the hosts to be not overloaded and consolidates VMs to the minimum number of hosts. Under normal status, the number of VMs allocated to each host is  $\frac{N}{M}$ , while in overloaded situation, at least  $\frac{N}{M} + 1$  VMs are allocated to a single host. Thus, the maximum number of overloaded hosts is  $M_o = \lfloor \frac{N}{\frac{N}{M} + 1} \rfloor$ , which is equivalent to  $M_o = \lfloor \frac{MN}{N+M} \rfloor$ .

In the whole scheduling interval  $T$ , we split the time into 3 parts  $T = (t_b + t_m)\tau + t_0$ , where  $t_b$  is the time that EEBA uses brownout to relieve overloads,  $t_m$  is the time consumed for VM migration,  $t_0$  is the time that hosts running at normal status and  $\tau \in \mathbb{R}^+$ . For the brownout and VM migration parts, the behaviors are as below:

- 1). During the  $t_b$ , the brownout controller selects application components on overloaded hosts and deactivates them. Because all the hosts are active during  $t_b$ , the cost of this part is  $t_b(MC_e + M_oC_o)$ .
- 2). During the  $t_m$ , if there are still overloaded hosts, VMs are migrated from the overloaded hosts  $M'_o$ , and  $M'_o \leq M_o$ . As the VM migration time is  $t_m$  and all the hosts are active during migration, the total cost during this time of period is  $t_m(MC_e + M'_oC_o)$ .

Therefore, the total cost  $C$  during  $t_b + t_m$  is defined as below

$$C = t_b(MC_e + M_oC_o) + t_m(MC_e + M'_oC_o). \quad (10)$$

And the total cost incurred by EEBA for the input  $I$  is shown as

$$EEBA(I) = \tau[t_b(MC_e + M_oC_o) + t_m(MC_e + M'_oC_o)]. \quad (11)$$

The optimal offline algorithm for this problem only keeps the VMs at each host and does not apply brownout and VM consolidation. Therefore, the total cost of an optimal offline algorithm is defined as

$$OPT(I) = \tau(t_b + t_m)MC_e. \quad (12)$$

Then we compute the competitive ratio of an optimal offline deterministic algorithm as

$$\frac{EEBA(I)}{OPT(I)} = \frac{\tau[t_b(MC_e + M_oC_o) + t_m(MC_e + M'_oC_o)]}{\tau(t_b + t_m)MC_e}. \quad (13)$$

TABLE 2  
Host / VM Types and Capacity

Name	CPU	Cores	Memory	Bandwidth	Storage
Host Type 1	1.86 GHz	2	4 GB	1 Gbit/s	100 GB
Host Type 2	2.66 GHz	2	4 GB	1 Gbit/s	100 GB
VM Type 1	2.5 GHz	1	870 MB	100 Mbit/s	1 GB
VM Type 2	2.0 GHz	1	1,740 MB	100 Mbit/s	1 GB
VM Type 3	1.0 GHz	1	1,740 MB	100 Mbit/s	1 GB
VM Type 4	0.5 GHz	1	613 MB	100 Mbit/s	1 GB

As  $M'_o \leq M_o$ , we have

$$\frac{EEBA(I)}{OPT(I)} \leq \frac{\tau[(t_b + t_m)(MC_e + M_o C_o)]}{\tau(t_b + t_m)MC_e} = \frac{MC_e + M_o C_o}{MC_e}. \quad (14)$$

As  $M_o = \lfloor \frac{MN}{N+M} \rfloor$ , we have  $M_o \leq \frac{MN}{N+M}$  and combine with Equation (14) as well  $C_e = 1$ ,  $C_o = \varepsilon$ , the competitive ratio is defined as

$$\frac{EEBA(I)}{OPT(I)} \leq \frac{MC_e + M_o C_o}{MC_e} \leq \frac{M + \frac{MN}{N+M}\varepsilon}{M} = 1 + \frac{N\varepsilon}{N+M}. \quad (15)$$

□

## 5 PERFORMANCE EVALUATION

### 5.1 Environment Setting

We use the CloudSim framework [25] to simulate a cloud data center with 100 hosts. Two types of hosts and four types of VMs are modeled based on current offerings in EC2 as shown in Table 2. The power models of hosts we adopted are derived from IBM System x3550 M3 with CPU Intel Xeon X5670 and X5675 [26], and their power consumption at different utilization levels are demonstrated in Table 3. We assume that the idle host consumes 50 percent full utilization.

The application modeled in CloudSim is based in a class called cloudlet. We have extended the cloudlet to model application with optional components, and each component has its corresponding CPU utilization, discount amount, and connection parameter. The components are uniformly distributed on VMs.

We adopt the realistic workload trace from more than 1,000 PlanetLab VMs [27] to create an overloaded environment [28]. Our experiments are simulated under one-day

scheduling period and repeated 10 times based on 10 different days PlanetLab data. The brownout is invoked every 300 seconds (5 minutes per time slot) if hosts power surpasses the power threshold. The CPU resource is measured with capacity of running instructions. Assuming that the application workload occupies 85 percent resource on a VM and the VM has 1,000 million instructions per second (MIPS) computation capacity, then it presents the application constantly requires  $0.85 \times 1000 = 850$  MI to  $1.0 \times 1,000 = 1,000$  MI per second in the 5 minutes.

To reflect the impact of different configurations, we investigate a set of parameters as shown in Table 4:

- 1) Optional component utilization threshold: it represents the threshold portion of utilization that is optional and can be reduced by deactivating optional components. An optional component with 25 percent utilization means 25 percent of application utilization is reduced if it is set as deactivated. We adjust this parameter from 0 to 100 percent and categorize it as 25, 50, 75 and 100 percent.
- 2) Percentage of optional components: it represents how many components of the total components are optional. Assuming the number of all components is  $num_{com}$  and the number of optional components is  $num_{opt}$ , then the percentage of optional components is  $\frac{num_{opt}}{num_{com}}$ . This parameter is varied from 0 to 100 percent and is categorized as 20, 50, 75 and 100 percent.
- 3) Percentage of connected components: it represents how many components are connected among all the components. Assuming the number of connected components is  $num_{connected}$ , then the percentage of connected components is  $\frac{num_{connected}}{num_{com}}$ . This parameter is also varied from 0 to 100 percent and is categorized as 25, 50, 75 and 100 percent. The connections between components are randomly generated based on percentage of connected components.
- 4) Discount: It represents the discount amount that allowed to be paid back to the user if components are deactivated. We assume that application maximum discount is identical to the optional component utilization threshold, for example 50 percent optional component utilization threshold comes along with 50 percent discount.

TABLE 3  
Power Consumption of Servers in Watts

Servers	0% (sleep mode)	10%	20%	30%	40%	50%	60%	70%	80%	90%	100% (max)
IBM x3550 M3 (Interl Xeon X5670 CPU)	66	107	120	131	143	156	173	191	211	229	247
IBM x3550 M3 (Intel Xeon X5675 CPU)	58.4	98	109	118	128	140	153	170	189	205	222

TABLE 4  
Parameter Configurations for Testing

Parameters	P1: Optional component utilization threshold	P2: Percentage of optional Components	P3: Percentage of connected components	P4: Discount
Range	0% to 100%	0% to 100%	0% to 100%	0% to 100%
Categories	25%, 50%, 75%, 100%	25%, 50%, 75%, 100%	25%, 50%, 75%, 100%	varying with P1



TABLE 5  
A Testcase Example

Testcase ID	Optional component utilization threshold	Percentage of optional Components	Percentage of connected components	Discount
TC1	50%	50%	25%	50%

We assume that the components utilization  $u(App_c)$  and discount  $d(App_c)$  conform normal distribution  $u(App_c) \sim N(\mu, \sigma^2)$ ,  $d(App_c) \sim N(\mu, \sigma^2)$ , the  $\mu$  is the mean utilization of component utilization or discount, which is computed as the optional component utilization threshold (or discount amount) divided by the number of optional components. The  $\sigma^2$  is the standard deviation of components utilization or discount.

Based on  $\sigma^2$ , we consider two component design patterns according to component utilization and discount. One pattern is that components are designed with uniform or approximate utilization and discount, which means each component is designed to require same or approximate resource amount, like there are five components and each component requires 10 percent utilization and offers 10 percent discount. We define the components as *approximate* if their utilization standard deviation and discount standard deviation are both less than 0.1. Another pattern is that components utilization and discount are conspicuous different, which means the components are designed to require quite different resource. We define the components as *different* if either their utilization standard deviation or discount standard deviation is larger than 0.1.

According to Table 4, Table 5 shows a testcase with configured parameters, the optional component utilization threshold is configured as 50 percent, the percentage of optional utilization is configured as 50 percent, the percentage of connected components is set as 25 percent and the discount is 50 percent.

Table 6 demonstrates an application components example fits the configurations in Table 5. This application consists of eight components: four of them (50 percent) are optional components. Each component has utilization, discount and connected relationship with other components: the optional component utilization threshold is 50 percent (the utilization sum of component 5, 6, 7 and 8), there are two components (20 percent) of all components are connected (component 5 and 6) and the total discount of optional components is 50 percent.

## 5.2 Results and Analysis

In this section, we compare EEBA performance with two baselines algorithms:

TABLE 6  
An Application Component Example 1

Components ID	Mandatory / Optional	Utilization	Discount	Connected
Comp 1	Mandatory	10%	10%	N/A
Comp 2	Mandatory	10%	10%	N/A
Comp 3	Mandatory	20%	20%	N/A
Comp 4	Mandatory	10%	10%	N/A
Comp 5	Optional	5%	5%	Comp8
Comp 6	Optional	10%	10%	Comp7
Comp 7	Optional	15%	20%	N/A
Comp 8	Optional	20%	15%	N/A

- 1) *VM Placement and Consolidation algorithm*: the algorithm is described in Section 4.1. We configure its upper threshold as 0.8 and the lower threshold as 0.2.
- 2) *Utilization-based Probabilistic VM consolidation algorithm (UBP)* [12]: in the VM placement, UBP adopts the same approach as PCO: sorting all the VMs in decreasing order based on their utilization and allocating each VM to the host that increases the least power consumption. In the VM consolidation phase, UBP applies a probabilistic method [11] to select VMs from overloaded host. The probabilistic method calculates the migration probability based on PM utilization  $u$  as

$$f_m(u) = \left(1 - \frac{u-1}{1-T_h}\right)^\lambda, \quad (16)$$

where  $f_m(u)$  is the migration probability,  $T_h$  is the upper threshold for detecting overloads and  $\lambda$  is a constant to adjust probability. We configure the  $T_h = 0.8$  and  $\lambda = 1$ .

In EEBA, we also configure  $TP = 0.8$  that is as same as the upper threshold in PCO and  $T_h$  in UBP.

We separately conduct experiments for the two design patterns to evaluate algorithm performance. With approximate components, our proposed policies LUFCS, LPFCS and HUPRFCS select the same components, so we focus on comparing PCO, UBP, NUFCS and LUFCS policies, which represent baseline algorithms without brownout, EEBA with single component selection policy and EEBA with multiple components selection policy respectively. While with different components, we focus on comparing the LUFCS, LPFCS and HUPRFCS policies to evaluate performance of different multiple components selection policies.

In addition, as introduced in Section 3.1, components may be connected. Therefore, to investigate the effects of individual component selection and connected components selection, we separately run experiments for components without connections and connected components.

As PCO and UBP performance are not influenced by the parameters in Table 4, we first obtain their results as baselines. The PCO leads to 345.3 kWh with 95 percent confidence interval (CI): (336.9, 353.7), and UBP reduces this value to 328.5 kWh with 95 percent CI: (321.1, 335.9). Both these two algorithms offer no discount and no disabled utilization. Because UBP performance is better than PCO, we set PCO as the benchmark. Referring to Equation (9),  $E_b$  is set as 345.3, so PCO algorithm efficiency  $Eff_{PCO} = 345.3/345.3 + 0.0 = 1.0$ ; for UBP algorithm, its efficiency is  $Eff_{UBP} = 321.1/345.3 + 0.0 = 0.95$ .

### 5.2.1 Components without Connections

1) *Varying Optional Component Utilization Threshold*. Fig. 2 shows the comparison between PCO, UBP, NUFCS and LUFCS when components are approximate by varying the

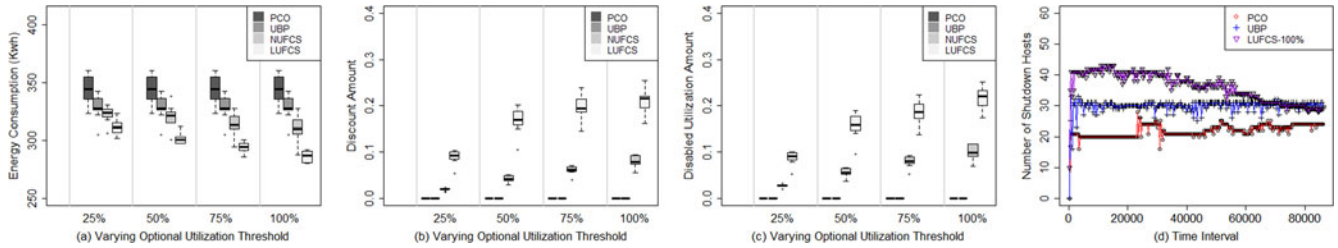


Fig. 2. Comparison by varying optional utilization threshold for approximate components.

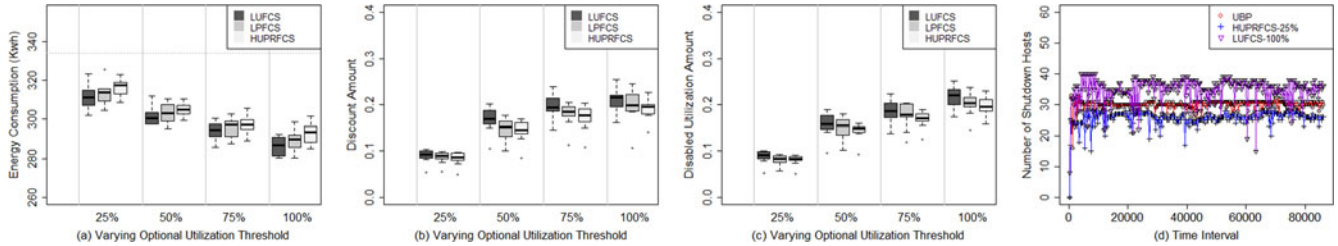


Fig. 3. Comparison by varying optional utilization threshold for different components

optional utilization threshold (the percentage of optional components is fixed as 50 percent). Fig. 2a shows the energy consumption of these policies respectively. NUFCS and LUFCS can save more energy when the optional component utilization threshold is larger. However, more discount amount is also offered to users according to Fig. 2b. The reason lies in that Figs. 2c and 2d demonstrate that more utilization amount is disabled in NUFCS and LUFCS, and more hosts are shutdown by these policies, which contributes to more energy reduction. We use UBP and NUFCS with 100 percent optional utilization threshold to compare the number of shutdown hosts with PCO, which shows the maximum and minimum number of shutdown hosts in this series of experiments. The number of shutdown hosts of other experiments falls between the UBP and LUFCS-100 percent lines in Fig. 2d. Compared with UBP, NUFCS reduces 2 to 7 percent energy and LUFCS reduces 6 to 21 percent energy while 1 to 6 percent and 8 to 22 percent discount amount are offered respectively.

Fig. 3 shows LUFCS, LPFCS and HUPRFCS policies' effects on energy and discount amount when components are different and optional utilization threshold increases, more energy is reduced and more discount amount is offered. As Figs. 3a and 2a illustrate, when components are different, LUFCS cannot save as much energy as when components are approximate. For example, LUFCS-100 percent in Fig. 3a shows it reduces maximum 15 percent energy (the dotted line represents UBP energy consumption), while LUFCS-100 percent in Fig. 2a saves 21 percent energy. Therefore, our proposed policies work better when components are designed with approximate resource requirement, which also shows the value of proper design of components or microservices. According to Figs. 3a and 3b, LUFCS reduces the maximum energy, but also offers the maximum discount amount, which gives LUFCS < LPFCS < HUPRFCS in energy and LUFCS > LPFCS > HUPRFCS in discount amount. We conduct paired t-tests for energy consumption of these policies, when optional utilization threshold is 25 percent, the  $p$ -value for LUFCS-25 percent and HUPRFCS-25 percent is 0.12, which shows nonstatistically significant differences between these policies, while the optional utilization threshold increases, the

$p$ -value for LUFCS-50 percent and LPFCS-50 percent is 0.038 and the  $p$ -value for LPFCS-50 percent and HUPRFCS-50 percent is 0.046, which shows there are statistically significant differences in energy consumption. As shown in Figs. 3c and 3d, it reflects more utilization amount is disabled and more hosts are shutdown in LUFCS as shown. The different effects between these policies come from the LUFCS selects components without considering discount, as it can select as many components as possible until achieving expected utilization reduction. While other two policies consider discount amount and do not deactivate as many components as in LUFCS.

2) *Varying Percentage of Optional Components.* Fig. 4 shows the results when components are approximate by varying the percentage of optional components (the optional component utilization threshold is fixed as 50 percent). Figs. 4a and 4b illustrate that in comparison to PCO and UBP, more energy is saved and more discount amount is offered with the increase of the optional components in NUFCS and LUFCS, which results from more options of components are available to be selected. In comparison to UBP, when more than 25 percent components are optional, NUFCS saves 1 to 7 percent energy and offers maximum 12 percent discount amount, and LUFCS saves 5 to 19 percent energy but offers 5 to 20 percent discount amount. As shown in Figs. 4c and 4d, compared with UBP, LUFCS disables maximum 19 percent utilization amount and more than 8 hosts averagely.

Fig. 5 compares LUFCS, LPFCS and HUPRFCS policies for different components when varying the percentage of optional components. The results in Figs. 5a and 5b show that these policies save more energy when optional components increases, and show LUFCS < LPFCS < HUPRFCS in energy as well as LUFCS > LPFCS > HUPRFCS in discount amount. As demonstrated in Figs. 5c and 5d, LUFCS disables more utilization amount than other two policies and shuts down the maximum number of hosts when with 100 percent optional components. Through paired t-tests for 25 percent optional components, we observe the  $p$ -value for LUFCS and LPFCS is 0.035, which shows statistically significant differences. But the  $p$ -value for LPFCS and HUPRFCS is 0.095, which shows nonstatistically significant different. Similar  $p$ -values are also observed when more optional components are provided.

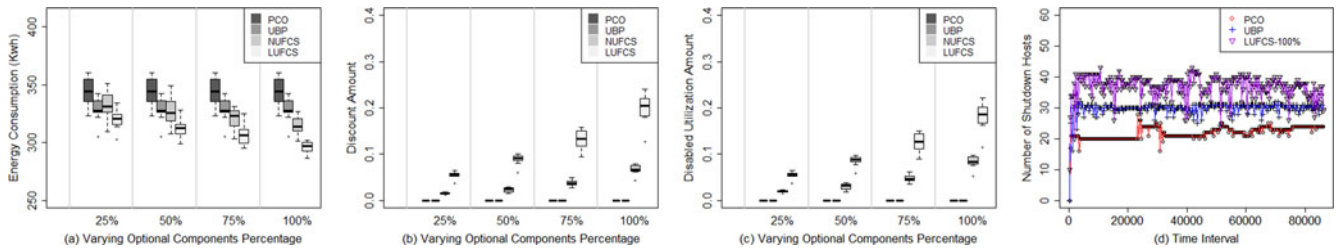


Fig. 4. Comparison by varying optional component percentage for approximate components.

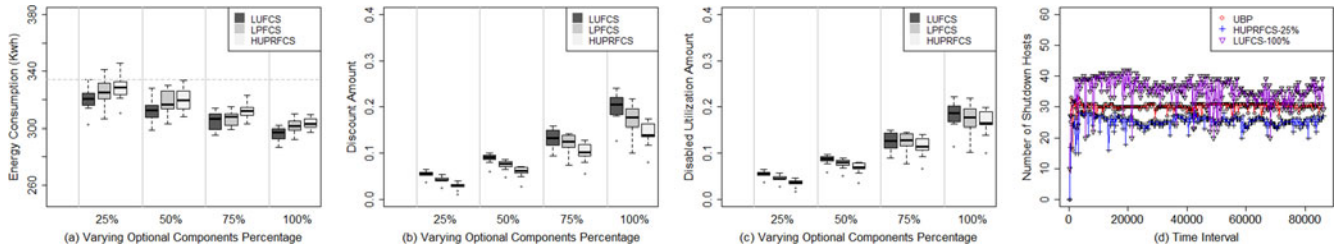


Fig. 5. Comparison by varying optional component percentage for different components.

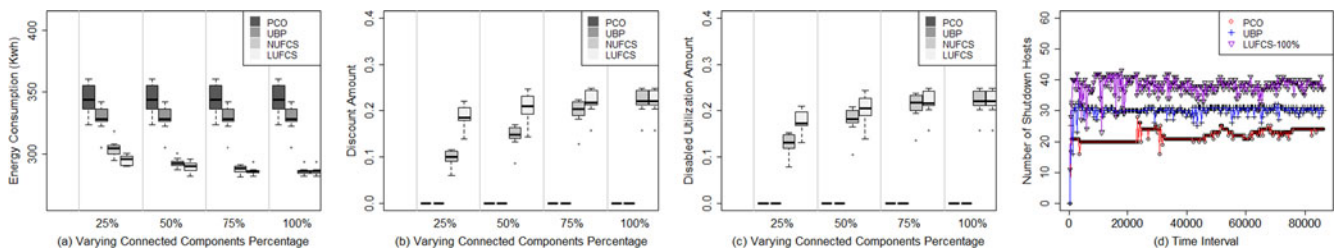


Fig. 6. Comparison by varying percentage of connected components for approximate components.

Although LUFCS with 100 percent optional components saves about 19 and 16 percent energy for approximate components and different components respectively, it is not recommended to set all components as optional since too much discount amount is offered. We will discuss policies selection considering the trade-offs in the Section 5.2.3.

### 5.2.2 Connected Components

After investigating the components without connections, we move to investigate connected components. As mentioned in Algorithm 2, in these cases, our proposed policies treat the connected components together and use their average utilization or discount to sort. Fig. 6 shows the PCO, UBP, NUFCS and LUFCS for approximate components when varying the percentage of connected components (optional component utilization threshold and percentage of optional components are both fixed as 50 percent). Fig. 6a shows that the connected components affects the NUFCS impressively. The energy consumption drops heavily in NUFCS when the percentage of connected components increases, i.e., from 9 to 21 percent reduction compared with UBP. While in LUFCS, the connected components do not affect its performance significantly. Although the energy consumption is also reduced when the percentage of connected components increases, energy consumption drops slowly from 14 to 21 percent. When 100 percent components are connected, NUFCS and LUFCS produce the same effects. As shown in Fig. 6b, with the increase of connected components, discount amount increases fast from 10 to 23 percent in NUFCS while slowly in LUFCS from 17 to 23 percent. NUFCS and LUFCS both offer same discount amount when all the components are

connected. For the cases that save more energy, like NUFCS or LUFCS with 100 percent connected components, Figs. 6c and 6d show that more utilization amount is disabled and more hosts are shutdown than baseline algorithms.

Fig. 7 illustrates the comparison of LUFCS, LPFCS and HUPRFCS for different components when varying the percentage of connected components. Fig. 7a shows that when connected components are larger than 75 percent, these policies do not result in significant differences, this is due to when the percentage of connected components increases, similar deactivated component lists are obtained although these components may be put into the list in different orders by these policies. Apparent differences for discount amount and disabled utilization amount are illustrated in Figs. 7b and 7c when connected components are less than 75 percent, like LUFCS reduces 2 to 5 percent energy than LPFCS and 5 to 10 percent energy than HUPRFCS, LUFCS offers 4 to 10 percent more discount than LPFCS and 9 percent to 15 percent more discount amount than HUPRFCS. Fig. 7d shows that when components are connected, more hosts are shutdown than UBP. In summary, our proposed multiple components selection policies works better under components with lower connected percentage up to 75 percent, which enables to provide multiple choices for service provider rather than providing same effects.

To evaluate the effects of combined parameters, we vary optional component utilization threshold and percentage of connected components together. We choose the optional component utilization threshold, as this parameter shows



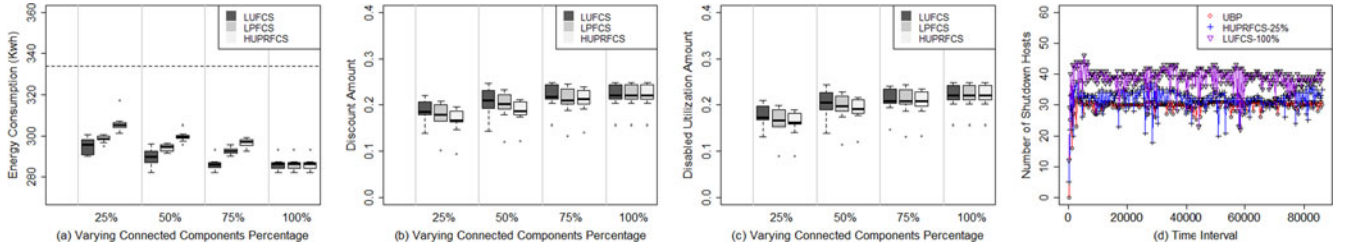


Fig. 7. Comparison by varying percentage of connected components for different components.

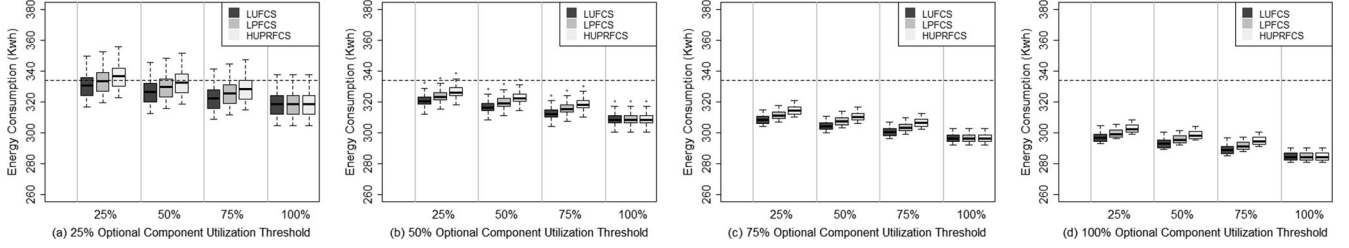


Fig. 8. Energy consumption comparison by varying percentage of connected components and optional component utilization threshold.

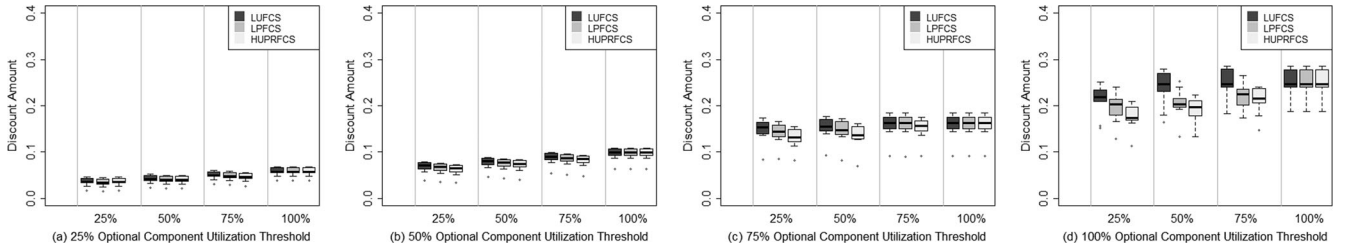


Fig. 9. Discount amount comparison by varying percentage of connected components and optional component utilization threshold.

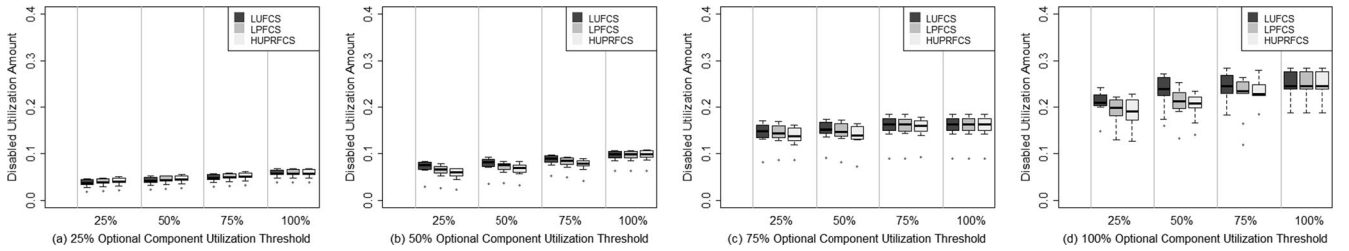


Fig. 10. Disabled utilization amount comparison by varying percentage of connected components and optional component utilization threshold.

more significant effects than the percentage of optional component in energy and discount. Figs. 8, 9, and 10 demonstrate the energy consumption, discount amount and disabled utilization amount separately when varying these two parameters together. Each subfigure is with fixed optional component utilization threshold and variable percentage of connected components, for example, Fig. 8a represents energy consumption when optional component utilization threshold is 25 percent and percentage of connected component is varied from 25 to 100 percent. Fig. 8 shows that energy is reduced when connected components increases or larger optional component utilization threshold is given. For the compared policies, LUFCS, LPFCS and HUPRFCS show similar results when optional component utilization threshold is below 25 percent or percentage of connected components is above 75 percent. This is because when optional component utilization threshold is low, the disabled utilization is quite close for different policies, and higher percentage of connected components also contributes to deactivating the same list of components. For other cases that show statistically significant differences in

energy consumption with  $p$ -value less than 0.05, like in Fig. 7a, the results are given as  $LUFCS \leq LPFCS \leq HUPRFCS$ . In these cases, Figs. 9 and 10 also show that  $LUFCS > LPFCS > HUPRFCS$  in discount amount and disabled utilization.

In conclusion, EEBA algorithm saves more energy than the VM consolidation approaches without brownout, like PCO and UBP. It is noticed that our experiments are mainly focused on optimizing servers energy consumption, so the network infrastructure energy consumption is not optimized. Since the component selection policies in brownout controller can be modelled into applications, like in [6], they are insensitive to network infrastructures.

### 5.2.3 Policy Selection Recommendation

To help make choices for component selection policies, we use the Equation (9) to calculate their algorithm efficiency and summarize suitable policies under different configurations to achieve better energy efficiency. We consider energy consumption and discount with the same importance, so the  $\alpha$  is set as 1. Table 7 shows the results for

TABLE 7  
Recommended Policies for Components without Connections under Different Configurations

Components Design Pattern	Discount Constraint	Optional Component Utilization Threshold	Percentage of Optional Components	Recommend Policy	Algorithm Efficiency
Approximate Components	$\leq 5\%$	$\leq 100\%$	$\leq 100\%$	NUFCS	0.947 with 95% CI: (0.941, 0.953)
	$>5\%$			LUFCS	0.91 with 95% CI: (0.887, 0.933)
Different Components	$\leq 100\%$	$\leq 50\%$	$\leq 100\%$	LUFCS	0.918 with 95% CI: (0.895, 0.941)
		50%-75%		LPFCS	0.913 with 95% CI: (0.891, 0.936)
		$>75\%$		HUPRFCS	0.908 with 95% CI: (0.885, 0.931)

TABLE 8  
Recommended Policies for Connected Components under Different Configurations

Components Design Pattern	Discount Constraint	Percentage of Connected Components	Optional Component Utilization Threshold	Percentage of Optional Components	Recommended Policy	Algorithm Efficiency with 95% CI
Approximate Components	$\leq 5\%$	$\leq 100\%$	$\leq 100\%$	$\leq 100\%$	NUFCS	0.901 (0.852, 0.953)
	$>5\%$		$\leq 100\%$		LUFCS	0.877 (0.852, 0.902)
Different Components	$\leq 100\%$	$\leq 50\%$	$\leq 50\%$	$\leq 100\%$	LUFCS	0.895 (0.859, 0.931)
			$>50\%$		LPFCS	0.89 (0.858, 0.922)
		50%-75%	$\leq 50\%$		LPFCS	0.886 (0.855, 0.917)
			$>50\%$		HUPRFCS	0.881 (0.856, 0.906)
		$>75\%$	$\leq 100\%$		HUPRFCS	0.880 (0.85, 0.91)

components without connections and Table 8 presents the results for the connected components.

To sum up, for components without connections, 1) when the components are approximate, NUFCS fits in the configurations when service provider allows maximum 5 percent discount and LUFCS performs better when more discount amount is allowed by service provider. 2) When the components are different, although the discount constraint is not as important as in the approximate components cases, the policies are picked out by other parameters, for instance, LUFCS achieves the best efficiency with less than 50 percent optional component utilization threshold, LPFCS overwhelms others with 50 to 75 percent optional component utilization threshold, HUPRFCS performs the best efficiency with more than 75 percent optional components utilization threshold.

For connected components, the suitable conditions are more complex: 1) when the components are approximate, NUFCS is recommended if discount amount is limited under 5 percent and LUFCS is suggested if more than 5 percent discount amount is allowed; 2) when the components are different, recommended policy changes via different configurations. For example, when connected components are less than 50 percent, if optional component utilization threshold is less than 50 percent, LUFCS is recommended; if optional component utilization threshold is larger than 50 percent, LPFCS is recommended. When connected components are between 50 percent and 75, LPFCS is recommended for optional component utilization threshold that is not larger than 50 percent, HUPRFCS is recommended for optional component utilization threshold larger than 50 percent. When more than 75 percent components are connected, any policy achieves quite close results, HUPRFCS is a choice.

## 6 CONCLUSIONS AND FUTURE WORK

Brownout has been proven effective to solve the overloaded situation in cloud data centers. Additionally, brownout can also be applied to reduce energy consumption. We introduce the brownout enabled system model by considering application components, which are either mandatory or optional. In the model, the brownout controller can

deactivate the optional components to reduce data center energy consumption while offering discount to users. We also propose a brownout enabled algorithm to determine when to use brownout and how much utilization on a host is reduced. Then we present a number of policies to select components and investigate their effects on energy consumption and discount offering.

In our experiments, we consider different configurations, such as components without connections, connected components, approximate components, different components and etc. The results show that these proposed policies save more energy than the baselines PCO and UBP. The comparison of proposed policies demonstrates that these policies fit in different configurations. Considering the discount amount offered by a service provider, NUFCS is recommended when a small amount of discount (like less than 5 percent) is offered, as it can reduce maximum 7 percent energy consumption in contrast to UBP. When more discount amount (like more than 5 percent) is allowed by service provider, other multiple components selection policies are recommended, for example, compared with UBP, HUPRFCS saves more than 20 percent energy with 10 to 15 percent discount amount.

As for future work, to avoid ineffective deactivation, we plan to investigate Markov Decision Process to determine whether the energy consumption would be reduced if some components are deactivated. We also plan to implement proposed policies and deploy them to OpenStack and web application system such as Apache web server.

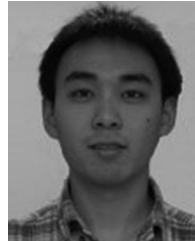
## ACKNOWLEDGMENTS

This work is supported by the China Scholarship Council (CSC), Australia Research Council Future Fellowship, and Discovery Project Grants.

## REFERENCES

- [1] R. Buyya, C. S. Yeo, and S. Venugopal, "Market-oriented cloud computing: Vision, hype, and reality for delivering it services as computing utilities," in *Proc. 10th IEEE Int. Conf. High Performance Comput. Commun.*, 2008, pp. 5-13.
- [2] T. Kaur and I. Chana, "Energy efficiency techniques in cloud computing: A survey and taxonomy," *ACM Comput. Surveys*, vol. 48, no. 2, 2015, Art. no. 22.

- [3] M. Pedram, "Energy-efficient datacenters," *IEEE Trans. Comput.-Aided Des. Integr. Circuits Syst.*, vol. 31, no. 10, pp. 1465–1484, Oct. 2012.
- [4] C. Klein, M. Maggio, K.-E. Årzén, and F. Hernández-Rodríguez, "Brownout: Building more robust cloud applications," in *Proc. 36th Int. Conf. Softw. Eng.*, 2014, pp. 700–711.
- [5] S. Newman, *Building Microservices*. Sebastopol, CA, USA: O'Reilly Media, 2015.
- [6] J. Dürango, et al., "Control-theoretical load-balancing for cloud applications with brownout," in *Proc. 53rd IEEE Conf. Decision Control*, 2014, pp. 5320–5327.
- [7] N. J. Kansal and I. Chana, "Cloud load balancing techniques: A step towards green computing," *Int. J. Comput. Sci. Issues*, vol. 9, no. 1, pp. 238–246, 2012.
- [8] J. E. Pecero, H. J. F. Huacuja, P. Bouvry, A. A. S. Pineda, M. C. L. Locés, and J. J. G. Barbosa, "On the energy optimization for precedence constrained applications using local search algorithms," in *Proc. Int. Conf. High Performance Comput. Simul.*, 2012, pp. 133–139.
- [9] A. Beloglazov, J. Abawajy, and R. Buyya, "Energy-aware resource allocation heuristics for efficient management of data centers for cloud computing," *Future Generation Comput. Syst.*, vol. 28, no. 5, pp. 755–768, 2012.
- [10] A. Beloglazov and R. Buyya, "Optimal online deterministic algorithms and adaptive heuristics for energy and performance efficient dynamic consolidation of virtual machines in cloud data centers," *Concurrency Comput.: Practice Experience*, vol. 24, no. 13, pp. 1397–1420, 2012.
- [11] C. Mastroianni, M. Meo, and G. Papuzzo, "Probabilistic consolidation of virtual machines in self-organizing cloud data centers," *IEEE Trans. Cloud Comput.*, vol. 1, no. 2, pp. 215–228, Jul.–Dec. 2013.
- [12] Q. Chen, J. Chen, B. Zheng, J. Cui, and Y. Qian, "Utilization-based VM consolidation scheme for power efficiency in cloud data centers," in *Proc. IEEE Int. Conf. Commun. Workshop*, 2015, pp. 1928–1933.
- [13] A. Corradi, M. Fanelli, and L. Foschini, "VM consolidation: A real case based on OpenStack cloud," *Future Generation Comput. Syst.*, vol. 32, pp. 118–127, 2014.
- [14] M. A. Salehi, P. R. Krishna, K. S. Deepak, and R. Buyya, "Preemption-aware energy management in virtualized data centers," in *Proc. 5th Int. Conf. Cloud Comput.*, 2012, pp. 844–851.
- [15] Z. Han, H. Tan, G. Chen, R. Wang, Y. Chen, and F. C. M. Lau, "Dynamic virtual machine management via approximate markov decision process," in *Proc. 35th Annu. IEEE Int. Conf. Comput. Commun.*, Apr. 2016, pp. 1–9.
- [16] A. Beloglazov and R. Buyya, "OpenStack neat: A framework for dynamic and energy-efficient consolidation of virtual machines in openstack clouds," *Concurrency Comput.: Practice Experience*, vol. 27, no. 5, pp. 1310–1333, 2015.
- [17] G. von Laszewski, L. Wang, A. J. Younge, and X. He, "Power-aware scheduling of virtual machines in DVFS-enabled clusters," in *Proc. IEEE Int. Conf. Cluster Comput. Workshops*, 2009, pp. 1–10.
- [18] V. Hanumaiah and S. Vrudhula, "Energy-efficient operation of multicore processors by DVFS, task migration, and active cooling," *IEEE Trans. Comput.*, vol. 63, no. 2, pp. 349–360, Feb. 2014.
- [19] K. H. Kim, A. Beloglazov, and R. Buyya, "Power-aware provisioning of virtual machines for real-time cloud services," *Concurrency Comput.: Practice Experience*, vol. 23, no. 13, pp. 1491–1505, 2011.
- [20] Q. Deng, D. Meisner, A. Bhattacharjee, T. F. Wenisch, and R. Bianchini, "CoScale: Coordinating CPU and memory system DVFS in server systems," in *Proc. 45th Annu. IEEE/ACM Int. Symp. Microarchitecture*, 2012, pp. 143–154.
- [21] F. Teng, L. Yu, T. Li, D. Deng, and F. Magoulès, "Energy efficiency of VM consolidation in IaaS clouds," *J. Supercomputing*, vol. 73, no. 2, pp. 782–809, 2017.
- [22] L. Tomás, C. Klein, J. Tordsson, and F. Hernández-Rodríguez, "The straw that broke the camel's back: Safe cloud overbooking with application brownout," in *Proc. Int. Conf. Cloud Auton. Comput.*, 2014, pp. 151–160.
- [23] K. Zheng, X. Wang, L. Li, and X. Wang, "Joint power optimization of data center network and servers with correlation analysis," in *Proc. IEEE Conf. Comput. Commun.*, 2014, pp. 2598–2606.
- [24] A. Borodin and R. El-Yaniv, *Online Computation and Competitive Analysis*. Cambridge, U.K.: Cambridge Univ. Press, 2005.
- [25] R. Buyya, R. Ranjan, and R. N. Calheiros, "Modeling and simulation of scalable cloud computing environments and the CloudSim toolkit: Challenges and opportunities," in *Proc. Int. Conf. High Performance Comput. Simul.*, 2009, pp. 1–11.
- [26] Standard performance evaluation corporation. [Online]. Available: <http://www.spec.org/power-ssj2008/results/res2010q2/>, 2010.
- [27] K. Park and V. S. Pai, "CoMon: A mostly-scalable monitoring system for PlanetLab," *ACM SIGOPS Operating Syst. Rev.*, vol. 40, no. 1, pp. 65–74, 2006.
- [28] A. Beloglazov and R. Buyya, "Managing overloaded hosts for dynamic consolidation of virtual machines in cloud data centers under quality of service constraints," *IEEE Trans. Parallel Distrib. Syst.*, vol. 24, no. 7, pp. 1366–1379, Jul. 2013.



**Minxian Xu** received the BSc and MSc degrees in software engineering from the University of Electronic Science and Technology of China, in 2012 and 2015, respectively. He is working toward the PhD degree in the Cloud Computing and Distributed Systems (CLOUDS) Laboratory, Department of Computing and Information Systems, University of Melbourne, Australia. His research interests include resource scheduling and optimization in cloud computing.



**Amir Vahid Dastjerdi** is a research fellow in the Cloud Computing and Distributed Systems (CLOUDS) Laboratory, University of Melbourne. His current research interests include cloud service coordination, scheduling, and resource provisioning using optimization, machine learning, and artificial intelligence techniques. He is a member of the IEEE.



**Rajkumar Buyya** is a professor and future fellow of the Australian Research Council, and the director of the Cloud Computing and Distributed Systems (CLOUDS) Laboratory, University of Melbourne, Australia. He is also serving as the founding CEO of Manjrasoft, a spin-off company of the university, commercializing its innovations in Cloud Computing. He has authored more than 425 publications and four text books including *Mastering Cloud Computing* published by McGraw Hill and Elsevier/Morgan Kaufmann,

2013, for Indian and international markets, respectively. He is one of the highly cited authors in computer science and software engineering worldwide. Microsoft Academic Search Index ranked him as the world's top author in distributed and parallel computing between 2007 and 2012. Software technologies for grid and cloud computing developed under his leadership have gained rapid acceptance and are in use at several academic institutions and commercial enterprises in 40 countries around the world. He has led the establishment and development of key community activities, including serving as foundation chair of the IEEE Technical Committee on Scalable Computing and five IEEE/ACM conferences. His contributions and international research leadership have been recognized through the award of the 2009 IEEE Medal for Excellence in Scalable Computing from the IEEE Computer Society. He is a fellow of the IEEE.

▷ For more information on this or any other computing topic, please visit our Digital Library at [www.computer.org/publications/dlib](http://www.computer.org/publications/dlib).